

MONTHLY MEMBERSHIP PROGRESS REPORT

LOCATION NIGERIA

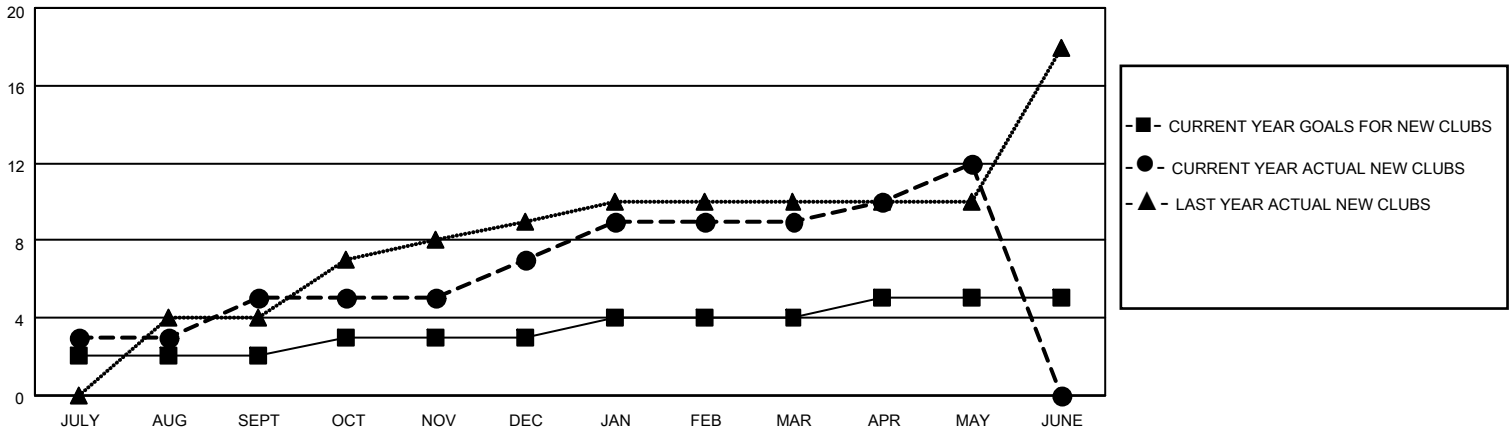
District 404 B1

Results as of: 5/31/2023

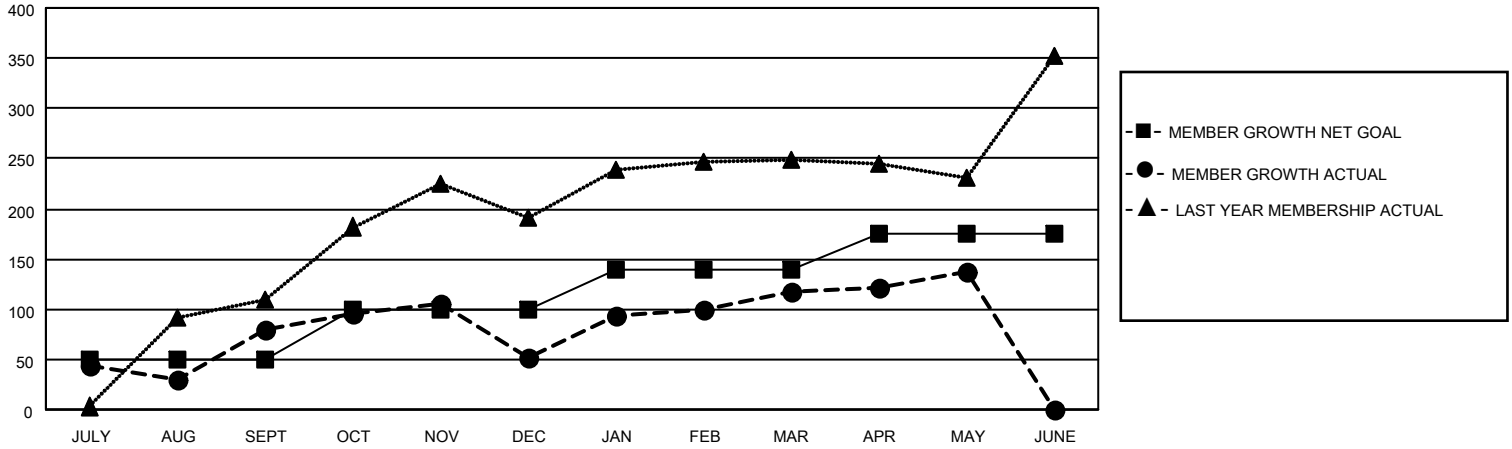
Clubs			
RESULTS FOR 2022-2023			
QUARTER	NEW CLUB GOAL	NEW CLUBS	DROPPED CLUBS
JULY/AUG/SEPT	2	5	2
OCT/NOV/DEC	1	2	7
JAN/FEB/MAR	1	2	0
APR/MAY/JUNE	1	3	0

Members			
RESULTS FOR 2022-2023			
QUARTER	MEMBER GROWTH NET GOAL	MEMBER GROWTH ACTUAL	DROPPED MEMBERS ACTUAL (including transfers)
JULY/AUG/SEPT	50	188	95
OCT/NOV/DEC	50	292	287
JAN/FEB/MAR	40	128	53
APR/MAY/JUNE	35	122	95

GOALS AND ACTUAL NEW CLUBS CUMULATIVE



GOALS AND ACTUAL MEMBERS CUMULATIVE



DROPPED CLUBS: 9

101 CLUBS OF 133 ADDED 1 OR MORE NEW MEMBERS

GENDER DISTRIBUTION

DROPPED MEMBERS

DECEASED	7
CLUB CANCELLED	104
OTHER	419
TOTAL	530

MALE	2,018 (63.32%)
FEMALE	1,168 (36.65%)
NON BINARY	0 (0.00%)
PREFER NOT TO ANSWER	1 (0.03%)

[CLICK HERE FOR CUMULATIVE MEMBERSHIP DATA](#)

TOTAL FAMILY UNIT MEMBERS	262
FAMILY MEMBERS PAYING HALF DUES	139